

Master of Electrical Engineering (Structure A)

DURATION 2 YEARS – 3 YEARS (Full time)
3 YEARS – 4 YEARS (Part time)

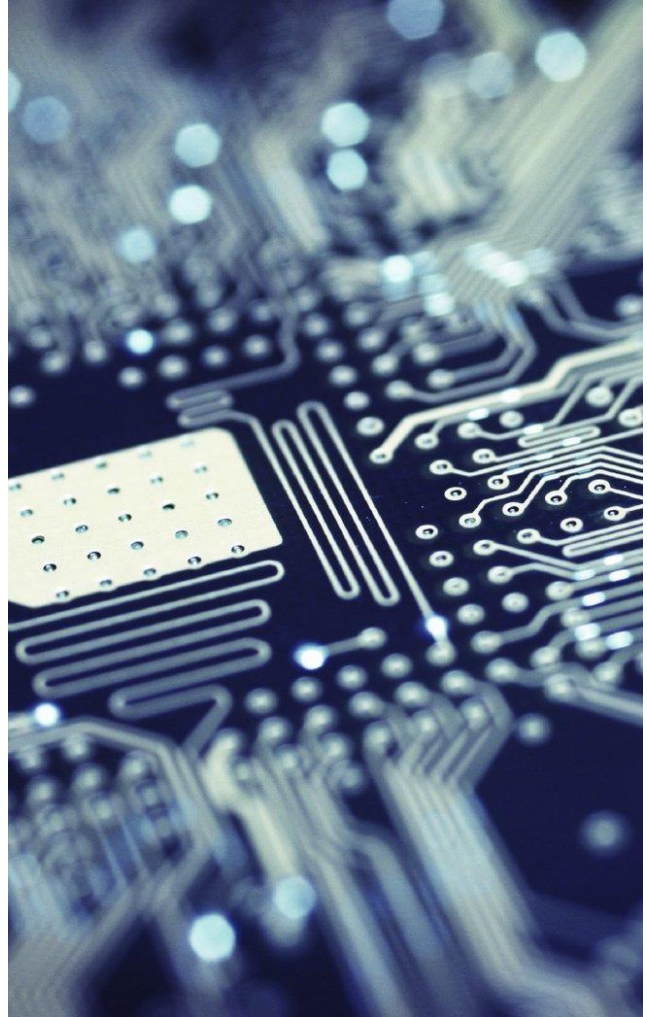
PROGRAM INFO

Master of Electrical Engineering (Structure A) is a full research program where candidates are given unique opportunity to follow their interest in a specialized area of research of Electrical/Electronic Engineering for 2-4 years (depending on the study mode either full-time or part-time) and make an important academic contribution to the knowledge of chosen research area. Prospective candidates are future researchers/ academicians in universities and/or research institutions, R&D Engineers, Engineering Specialists and Technopreneurs.

ENTRY REQUIREMENT

- A bachelor's degree in the relevant domain with 2nd class upper with honours or CGPA of 2.75 and above, or
- A bachelor's degree in the relevant domain with 2nd class lower with honours or CGPA of 2.50-2.74, and one (1) year working experience in the domain, or
- A bachelor's degree in the relevant domain with CGPA below 2.50 and five (5) years working experience in the domain.
- For International students: Test of English as a Foreign Language (TOEFL) score of 500 or International English Language Testing System (IELTS) score of 5.0 or its equivalent.

CONTACT:
CoGSHelpdesk@uniten.edu.my



KEY RESEARCH AREAS

- Automation and Embedded Computing System
- Communications Systems and Networks
- Micro and Nano Engineering
- Photonics Technologies
- Radio Frequency and Microwave Engineering
- Signal Processing and Control Systems
- System and Machine Intelligence
- Distributed Generation
- High Voltage Systems
- Power Quality
- Power System Analysis
- Renewable Energy and Energy Efficiency
- Smart Grid

FEE STRUCTURE

- **RM 2 850.00 (Malaysian)**
 - **RM 3 600.00 (International)**
- *fees per semester*